

**Gasb 34 Footages for Historical Cost  
Drain Length Log**

Drain-Improvement: Sedona Woods Sec. 1 Reconstruction

Drain Type:	Size:	Length Surveyors Report	Length (DB Query)	Length Reconcile	If Applicable	
					Price:	Cost:
RCP	42"	37'	28'	-9		
RCP	60"	223'	222.5'	-.5'		
RCP	72"	526'	675'	+149'		
Open		525'	525'	∅		
CMP	30"x48"	15'	15'	∅		

Sum:            1326'            1465.5            +139.5            Bond

Final Report: 1465.5

Comments:  
 \_\_\_\_\_  
 \_\_\_\_\_  
 \_\_\_\_\_  
 \_\_\_\_\_  
 \_\_\_\_\_  
 \_\_\_\_\_

**Gasb 34 Footages for Historical Cost  
Drain Length Log**

Drain-Improvement: Henry Ebbert (modified for Sedona Woods Recon.)  
Vacated drain from Sta 2420 - 31+00

					If Applicable	
Drain Type:	Size:	Length Surveyors Report	Length (DB Query)	Length Reconcile	Price:	Cost:
Tile	14"	2110	2110'		\$4.25 lf	\$8967.50
Tile	15"	285'	285'		5 <sup>00</sup> lf	\$1425 <sup>00</sup>
open		1210'	1210'		19. <sup>55</sup> lf	\$23,655.50

Sum:                      3605                      3605                      \$34,048

Final Report: \_\_\_\_\_

Comments:  
\* vacated 980' with Sedona Woods Recon. This was 14" Tile.  
This reduced the historical cost by \$4165<sup>00</sup>  
 \_\_\_\_\_  
 \_\_\_\_\_  
 \_\_\_\_\_  
 \_\_\_\_\_

Sedona Relocation of Henry Ebbert Drain  
GASB 34 Calculations

Pipe Regulated = 1326  
Total Pipe Bonded = 8327 Feet

Therefore this improvement would be for 15.9241% of the bond amount.  
The bonds for Sedona Woods were as follows:

Storm Sewers = \$174,135.00  
Erosion Control = \$1647.20  
Total Amount = \$175,782.20

The improvement cost for the Henry Ebbert Drain Relocation is as follows:

$\$175,782.20 (0.159241) = \$27,991.73$

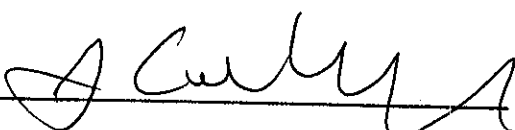
CERTIFICATE OF COMPLETION AND COMPLIANCE

To: Hamilton County Surveyor

Re: SEDONA, SECTION 1

I hereby certify that:

1. I am a Registered Land Surveyor or Engineer in the State of Indiana .
2. I am familiar with the plans and specifications for the above referenced subdivision .
3. I have personally observed and supervised the completion of the drainage facilities for the above referenced subdivision .
4. The drainage facilities within the above referenced subdivision to the best of my knowledge , information and belief have been installed and completed in conformity with all plans and specifications .

Signature:  Date: 1/29/04

Type or Print Name: J. CORT CROSBY

Business Address: 8901 OTIS AVENUE  
INDIANAPOLIS, IN 46216

Telephone Number: \_\_\_\_\_

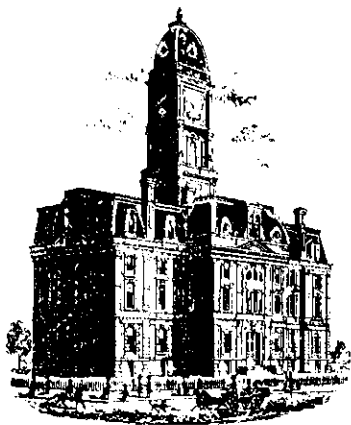
SEAL



INDIANA REGISTRATION NUMBER

920350

Revised 10/95



SURVEYOR'S OFFICE

# Hamilton County

Kenton C. Ward, Surveyor  
 Phone (317) 776-8495  
 Fax (317) 776-9628

Suite 188  
 One Hamilton County Square  
 Noblesville, Indiana 46060-2230

To: Hamilton County Drainage Board

August 31, 2004

Re: Henry Ebbert Drain: Sedona Reconstruction

Attached are as-builts, certificate of completion & compliance, and other information for Sedona Section 1 Reconstruction. An inspection of the drainage facilities for this section has been made and the facilities were found to be complete and acceptable.

During construction, changes were made to the drain, which will alter the plans submitted with my report for this drain-dated May 12, 2003. The report was approved by the Board at the hearing held June 23, 2003. (See Drainage Board Minutes Book 7, Pages 89-93)  
 The changes are as follows:

Structure:	T.C.:	I.E.:	Pipe:	Length:	Grade:	Original:	Difference:
Ex. End of Pipe		815.8					
151A	821.09	815.24	30"x48" CMP	15	0.66		
151A	821.09	815.24					
150	820.31	813.38	42	28	6.64	33	-5
150	820.31	812.91					
149	820.57	812.79	72	70.5	0.17	74	-3.5
149	820.57	812.79					
148	819.88	812.48	72	153	0.2	150	3
148	819.88	812.48					
147	819.37	811.97	72	304	0.17	302	2
147	819.37	811.97					
146		811.83	72	147.5	0.09	161	-13.5
103	818.24	810.24					
102	816.46	809.91	60	44.5	0.74	41	3.5
102	816.46	809.91					
101		808.92	60	178	0.56	182	-4

**RCP Pipe Totals:**

42	28
60	222.5
72	675

**Total:** 925.5

<b>Other Drain:</b>	
30" X 48" CMP	15
OPEN DITCH	525

**Total:** 540

The length of the drain due to the changes described above is now **1465.5 feet**.  
Note: Henry Ebbert original tile was vacated from Sta 21+20 to Sta 31+00 which was different then what was on the initial report. Therefore, 485.5 feet was added to the watershed's length.

The non-enforcement was approved by the Board at its meeting on June 23, 2003 and recorded under instrument #200300096390.

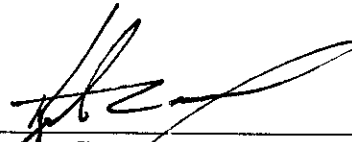
The following sureties were guaranteed by and released by the Board on its August 23, 2004 meeting.

**Bond-LC No:** 5003965  
**Insured For:** Storm Sewers  
**Amount:** \$174,135  
**Issue Date:** June 23, 2003

**Bond-LC No:** 5003964  
**Insured For:** Erosion Control  
**Amount:** \$1647.20  
**Issue Date:** June 23, 2003

I recommend the Board approve the drain's construction as complete and acceptable.

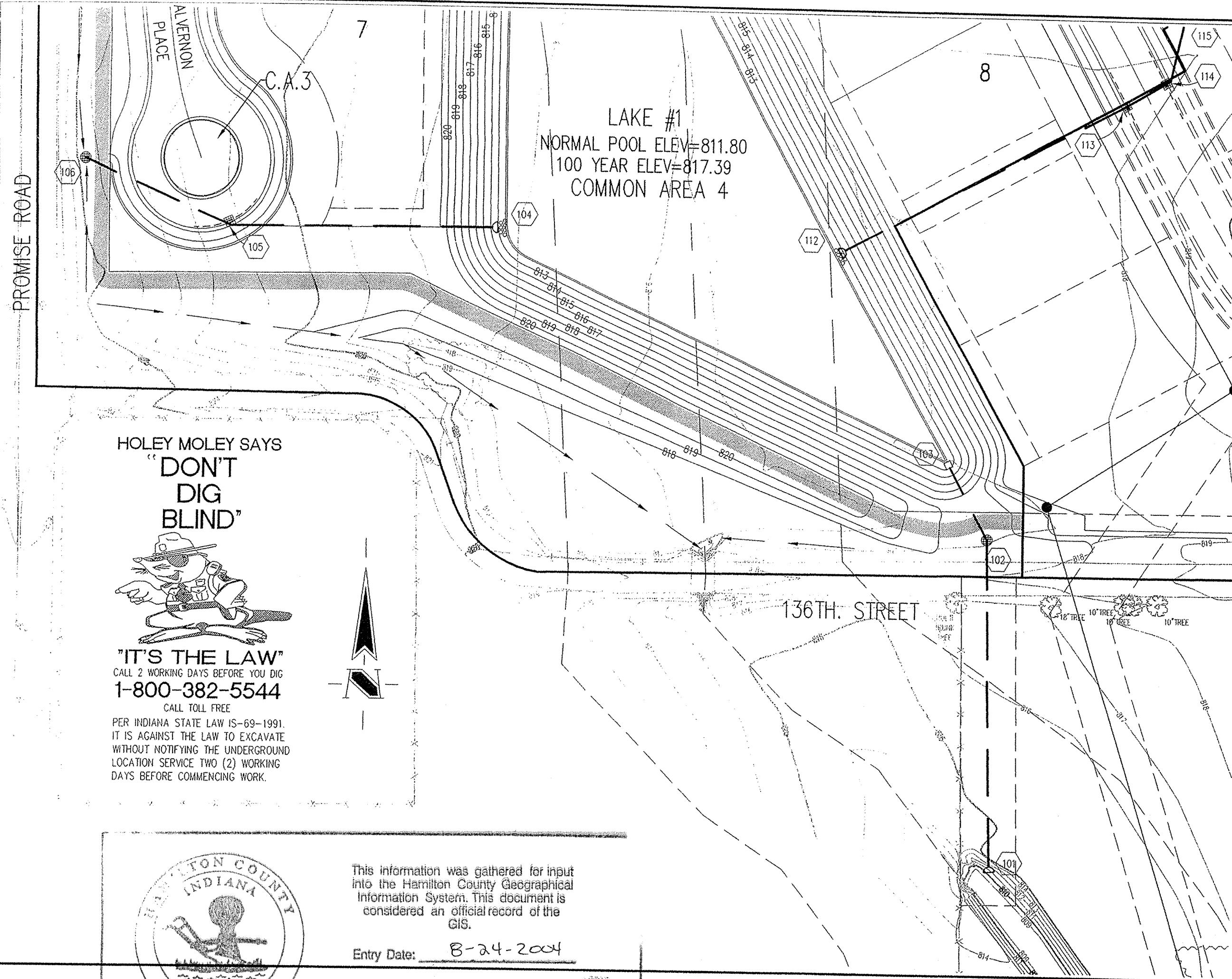
Sincerely,



---

Kenton C. Ward,  
Hamilton County Surveyor

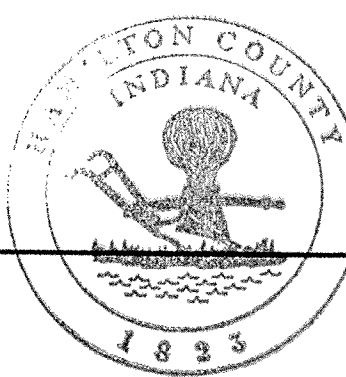
KCW/slm



- ### BENCHMARK
- HSE 16: HSE DISK IN CONCRETE @ SOUTH END OF ISLAND @ ENTRANCE OF SWEETBRIAR SECTION 1, SWEETBRIAR PARKWAY. ELEVATION = 825.65 (GPS) (NAVD 1988)
  - TBM 1: RR SPIKE 1.7 FEET UP @ EAST SIDE OF POWERPOLE #253-674 @ NORTH SIDE OF 131st STREET ± 140 FEET WEST OF CENTERLINE OF PROMISE ROAD. ELEVATION = 811.59 (NAVD 1988)
  - TBM 2: RR SPIKE SET 1 FOOT UP @ NORTHWEST SIDE OF POWERPOLE #070-685 @ SOUTH SIDE OF 131st STREET ± 760 FEET WEST OF CENTERLINE OF PROMISE ROAD ACROSS 2-STORY "HUFF" FARM HOUSE. ELEVATION = 818.75 (NAVD 1988)
  - TBM 3: RR SPIKE 1.3 FEET UP @ SOUTH SIDE OF POWERPOLE @ SOUTH SIDE OF 131st STREET ± 160 FEET WEST OF WEST PROPERTY LINE OF PARCEL 1 @ NORTH SIDE OF MOUND @ TOE OF SLOPE. ELEVATION = 828.98 (NAVD 1988)
  - TBM 4: CUT "C" @ NORTH WING WALL @ WEST SIDE OF PROMISE ROAD BRIDGE OVER SAND CREEK AT ROAD LEVEL. ELEVATION = 809.00 (NAVD 1988)
  - TBM 5: RR SPIKE @ NORTHWEST SIDE OF 24 INCH TREE @ SOUTHWEST CORNER OF PARCEL 2. ELEVATION = 822.33 (NAVD 1988)
  - TBM 6: RR SPIKE 0.7 FEET UP @ NORTH SIDE OF 12 INCH TWIN MAPLE IN TREE ROW @ SOUTH PROPERTY LINE OF PARCEL 1. ELEVATION = 825.25 (NAVD 1988)

HOLEY MOLEY SAYS  
**"DON'T DIG BLIND"**

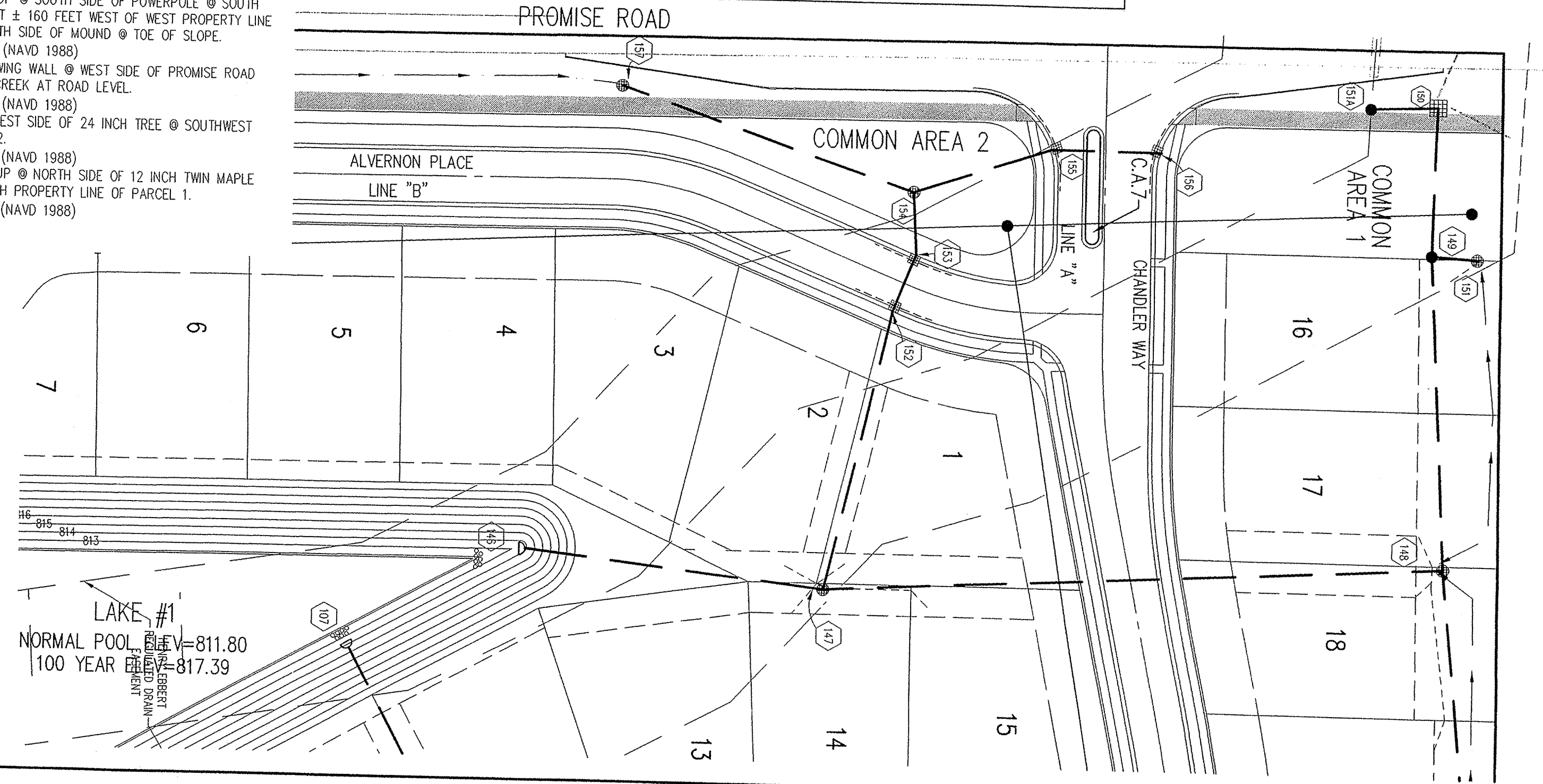
**"IT'S THE LAW"**  
CALL 2 WORKING DAYS BEFORE YOU DIG  
1-800-382-5544  
CALL TOLL FREE  
PER INDIANA STATE LAW 15-62-1991,  
IT IS AGAINST THE LAW TO EXCAVATE  
WITHOUT NOTIFYING THE UNDERGROUND  
LOCATION SERVICE TWO (2) WORKING  
DAYS BEFORE COMMENCING WORK.



This information was gathered for input into the Hamilton County Geographical Information System. This document is considered an official record of the GIS.

Entry Date: 8-24-2004

Entered by: SLM



### LEGEND/DETAILS

Sheet Number	Description
C802 4	Bedding Detail - Reinforced Concrete Pipe (RCP)
C802 2	Roll Curb Inlet Detail
C802 3	Beehive Inlet Detail
C802 1	Storm Manhole Detail
C802 5	Precast Concrete End Section
C802 8	RipRap Detail @ End Section

- ### GENERAL NOTES
- TEMPORARY TRAFFIC CONTROL DURING CONSTRUCTION TO CONFORM TO APPLICABLE LOCAL AND STATE STANDARDS.
  - ALL CONSTRUCTION ACTIVITY ON THIS SITE TO BE PERFORMED IN COMPLIANCE WITH APPLICABLE O.S.H.A. STANDARDS FOR WORKER SAFETY.
  - IT SHALL BE THE CONTRACTORS RESPONSIBILITY TO FIELD VERIFY ALL UTILITY LOCATIONS BEFORE CONSTRUCTION BEGINS.
  - CONTRACTORS SHALL MINIMIZE DAMAGE TO EXISTING TREES.

REVISIONS: AS SHOWN ON SHEET #148, #149 & #150, AND BENCHMARK.  
 2. DDP 08/10/03 URGENT SANITARY SEWER.  
 3. DDP 08/10/03 URGENT SANITARY SEWER SURFACE DRAINING, REVISED SANITARY SEWER.  
 4. DDP 08/10/03 URGENT SANITARY SEWER FROM ST. 146 TO 150A TO PICK UP DRAIN TILES.  
 5. DDP 08/10/03 URGENT SANITARY SEWER FROM ST. 146 TO 150A TO PICK UP DRAIN TILES.  
 6. DDP 08/10/03 URGENT SANITARY SEWER RECORD DRAWING.

**J. CORT CROBY**  
REGISTERED  
No. 920350  
STATE OF INDIANA  
PROFESSIONAL ENGINEER

DATE: 1/19/04

THIS DRAWING AND THE IDEAS, DESIGNS AND CONCEPTS CONTAINED HEREIN ARE THE EXCLUSIVE INTELLECTUAL PROPERTY OF THE SCHNEIDER CORPORATION, AND ARE NOT TO BE USED OR REPRODUCED, IN WHOLE OR IN PART, WITHOUT THE WRITTEN CONSENT OF THE SCHNEIDER CORPORATION.

© COPYRIGHTED BY THE SCHNEIDER CORP. (2003)

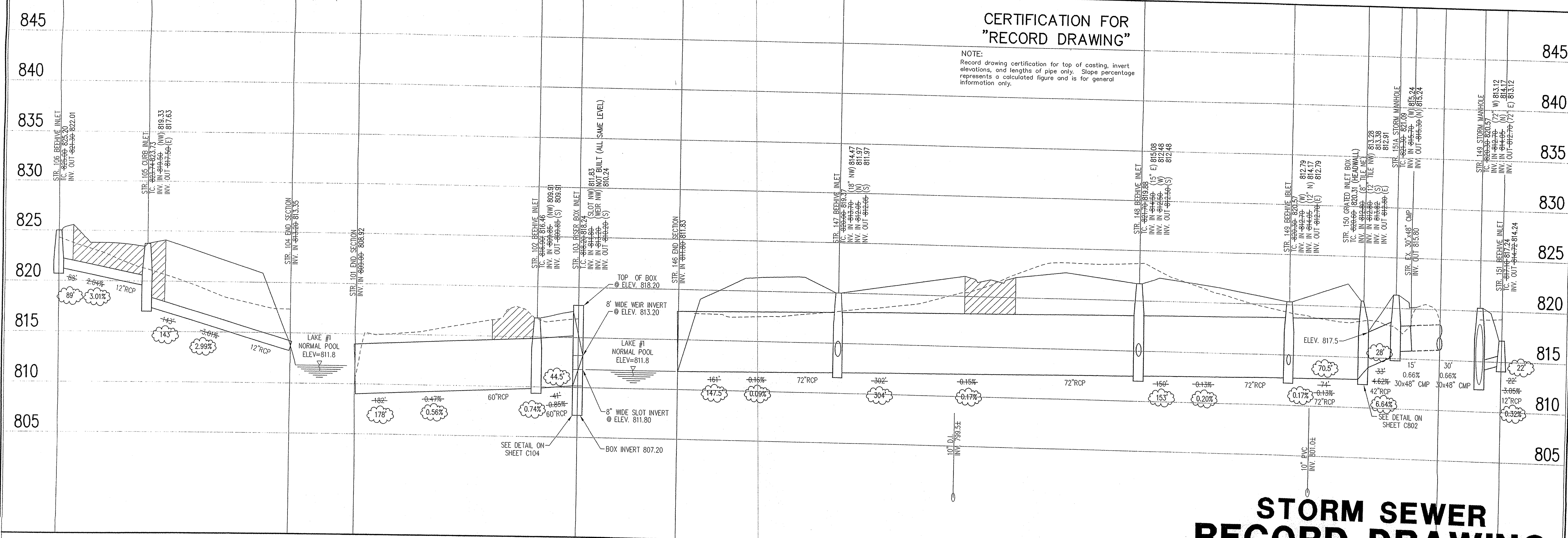
**Schneider**

THE SCHNEIDER CORPORATION  
Historic Fort Harrison  
8901 Otis Avenue  
Indianapolis, IN 46216-1037  
Telephone: 317.826.7100  
Fax: 317.826.7200  
www.schneidercorp.com

Architecture  
Civil Engineering  
Environmental Engineering  
Geotechnical Services  
GIS \* LIS  
Home Builder Services  
Interior Design  
Land Surveying  
Landscape Architecture  
Transportation Engineering

## STORM SEWER PLAN

SCALE: 1"=50'



# STORM SEWER RECORD DRAWING

### LEGEND

	Existing Grade
	New Grade
	Granular Backfill

SCALE: HORZ.: 1"=50'  
VERT.: 1"=5'

**SEDONA SECTION 1**  
FISHERS, INDIANA

**BOOMERANG DEVELOPMENT, LLC**  
FISHERS, INDIANA

DATE: 02/28/03 PROJECT NO: 3929.001  
 DRAWN BY: DRP CHECKED BY: JCC  
 SHEET TITLE: STORM SEWER PLAN

DRAWING FILES:  
 R:\3K\3929\001\DWG\SC01  
 XREF: R:\3K\3929\001\DWG\STORM  
 XREF: R:\3K\3929\001\DWG\0018  
 XREF: R:\3K\3929\001\DWG\0019  
 XREF: R:\3K\3929\002\DWG\0028

SHEET NO.: